

Engine Rated Power : 148 HP (110 kW) @ 2000 rpm
SAE J1995
Operating Weight : 21930 kg
Bucket Capacity : 1.05 m³ GP, 0.95 m³ RB
SAE, PCSA Heaped



We build a better future

*Actual Product may vary from the above image

R220_{LC}-7

Hyundai, your profit center.

A new chapter in construction equipment has now begun, making the dream a reality.
Introducing world class Hyundai excavators, specially designed and manufactured in India.



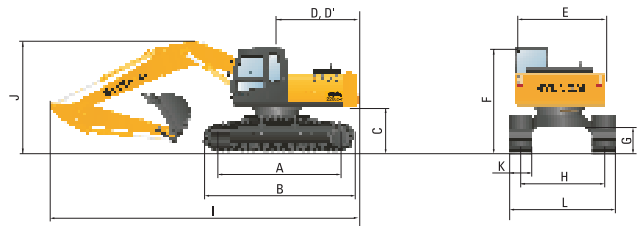
Specifications

Engine			
Model		Cummins 6BTA-5.9C	
Type		Water cooled, 4 cycle diesel, 6 cylinder in line, direct injection turbocharged, charge air cooled	
Rated flywheel horse power	SAE	J1995 (Gross)	148 HP (110 kW) @ 2000 rpm
		J1349 (Net)	141 HP (105 kW) @ 2000 rpm
	DIN	6271/1 (Gross)	151 PS (110 kW) @ 2000 rpm
		6271/1 (Net)	144 PS (105 kW) @ 2000 rpm
Max. Torque		610 Nm (450 lbf.ft) @ 1300 rpm	
Piston displacement		5880 cc	
Hydraulic System			
Main pump			
Type		Two variable displacement piston pumps	
Max. flow		2 x 220 lpm	
Sub-pump for pilot circuit		Gear pump	
Cross-sensing & fuel saving pump system			
Hydraulic motors			
Travel		Two speed axial piston motor with counter balance valve and parking brake	
Swing		Axial piston motor with automatic brake	
Relief valve settings			
Implement circuits		330 kgf/cm ²	
Travel		330 kgf/cm ²	
Swing circuit		240 kgf/cm ²	
Pilot circuit		35 kgf/cm ²	
Service valve		Installed	
Drives & Brakes			
Drive method		Fully hydrostatic type	
Drive motor		Axial piston motor in-shoe design	
Reduction system		Planetary reduction gear	
Max. drawbar pull		21100 kgf (46500 lbf)	
Max. travel speed (high/low)		5.3 kmph /3.4 kmph	
Gradeability		35 ^o (70%)	
Parking brake		Multi wet disc	
Swing System			
Swing motor		Axial piston motor	
Swing reduction		Planetary gear reduction	
Swing bearing lubrication		Grease bathed	
Swing brake		Multi wet disc	
Swing speed		11 rpm	
Undercarriage			
X-Leg type centre frame is integrally welded with reinforced box section track frames. The undercarriage includes lubricated rollers, idlers, track adjusters, with shock absorbing spring and sprockets, and track chain with double or triple grouser shoes.			
Centre frame		X-leg type	
Track frame		Pentagonal box type	
No. of shoes on each side		49	
No. of carrier rollers on each side		2	
No. of track rollers on each side		9	
No. of rail guards on each side		2	



Head Office	:	Plot No. A-2, M.I.D.C Chakan, Phase II, Village: Khalumbre, Taluka: Khed, Dist.: Pune- 410501 Email: marketing@hyundaiindia.net Tel. No.: 02135-301700 Fax. No.: 02135-301712 Toll Free No.: 180030000100
Regional Office North	:	Delhi Contact No. +91 11 45604521
Regional Office East	:	Kolkata Contact No. +913330581802
Regional Office South	:	Hyderabad Contact No. +91 404011 9032
Regional Office West	:	Mumbai Contact No. +91 22 40240320

Dimensions



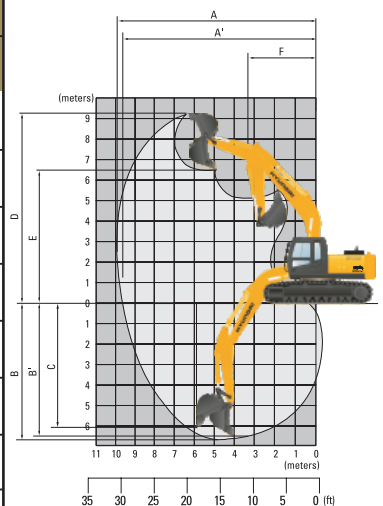
Dimensions

mm

A	Tumbler Distance	3650
B	Overall length of crawler	4440
C	Ground clearance of counter weight	1060
D	Tail swing radius	2830
D'	Rear-end length	2770
E	Overall width of upper structure	2700
F	Overall height of cabin	2920
G	Min. ground clearance	480
H	Track gauge	2390
I	Overall length	9570
J	Overall height of boom	3110
K	Track Shoe width	600
L	Overall width	2990

Working Ranges mm

Boom length (std.)		5680
Arm length (std.)		2400
A	Maximum Digging Reach.	9500
A'	Digging Reach on Ground.	9330
B	Max. Digging Depth.	6220
B'	Max. Digging Depth (8' level).	6010
C	Vertical Digging Depth.	5720
D	Maximum Digging Height.	9340
E	Maximum Dumping Height.	6520
F	Minimum Swing Radius.	3740



Operating Weight & Bucket Capacity

Operating weight	21930 kg
Bucket capacity	1.05m ³ GP, 0.95m ³ RB SAE Heaped

R220LC-7

PLEASE CONTACT